

BMW 2011



The Ultimate Driving Machine®

bmwusa.com

24

335i

M5

7

8

JOY CAN BE COUNTED.
JOY IS BMW

BMW EfficientDynamics
Less emissions. More driving pleasure.





انداز خود رو فارما

شماره شیبانه روزی ۰۸۵ ۸۸۶۲۰۲۱

asos.com

JOY IS THE HEART AND SOUL OF EVERY ULTIMATE DRIVING MACHINE.®

At BMW, we don't just make cars. We are the creators of emotion, and the guardians of one three-letter word: Joy. It's independent of everyone, and accountable to no one but the driver. And while others try to promise everything, we promise the most personal, cherished and human of all emotions.

Joy does not live in a vacuum, but here on earth. If Joy is to thrive now and in the future, thrilling BMW performance must go hand in hand with greater efficiency and decreased emissions. This is BMW's EfficientDynamics philosophy, and it has resulted in the most fuel-efficient luxury fleet in the automotive industry.¹

Joy is at the center of the BMW ownership experience – with BMW Ultimate Service.™ Included with each new vehicle, BMW Ultimate Service is a comprehensive suite of owner services, including no-cost BMW Maintenance for four years or 50,000 miles.²

In this brochure you will find the full selection of BMWs, with virtually every Series updated for 2011. We invite you to visit your authorized BMW center or bmwusa.com to view your choice of these automotive marvels – and discover even greater joy for 2011.

¹ Comparison based on a highway mileage analysis sourced from fuelconomy.gov of 13 competitive brands.

² Whichever comes first. Visit bmwusa.com/ultimateservice for more details.



ایراد خودرو فارما

تلفن: ۰۲۱-۸۸۸۶۲۰۸۵
 FarmaSOS.com

A HERITAGE OF BEING THE FIRST AND THE BEST: A SAMPLING OF BMW VEHICLES, AWARDS AND TECHNOLOGIES.

OVERALL PERFORMANCE

- AUTOMOBILE Magazine*
- “All-Stars”
 - 33 awards since 1990
 - 3 Series awarded 15 times since 1992
- “Readers’ Choice All-Stars”
 - 25 awards since 1998
- AutoWeek*
- “America’s Best”
 - 16 awards since 2001
- Car and Driver*
- “10Best” Cars
 - 26 awards since 1992
 - 3 Series awarded 19 years in a row

Edmunds.com/InsideLine.com

- “Editors’ Most WantedSM”
 - 40 awards since 1999
- “Consumers’ Top RatedSM”/
 - “Readers’ Most WantedSM”
 - 33 awards since 2002

ENGINE TECHNOLOGY

- 2008 World Green Car of the Year Award*
 - for BMW Advanced Diesel with BluePerformance technology
- International Engine of the Year Awards*
 - 45 awards since 1999, more than any other manufacturer

RETAINED VALUE

- Automotive Lease Guide (ALG)*
- “Luxury Brand Residual Value Award”
 - for highest predicted retained value of any luxury brand
 - 2004, 2005, 2006 Brand: BMW
 - 2007 Luxury Car: 6 Series
 - 2008 Luxury Car: 5 Series
 - 2008 Luxury Sports Car: 6 Series
 - 2009, 2010 Near Luxury Car: 1 Series
- kbb.com (Kelley Blue Book)*
- “Best Resale Value Award”
 - 13 awards since 2004
 - 2010 Best in Hybrid/ALT. Fuel Utility Vehicle Category: X5 xDrive35d
 - 2010 Overall Top 10: M3



1917 BMW’s first product: water-cooled six-cylinder airplane engines. In 1919 a BMW-powered biplane set a world altitude record of 32,000 ft.



1956 The classic 507 roadster, one of the most beautiful sports cars of all time, is one of the world’s most coveted collector cars today. Only 252 units were built.



1988 All Season Traction provides better stability and control in slippery road conditions all year long – on packed snow and ice, rain- and oil-slicked roads, wet leaves, and on sandy and rough surfaces.



2004 BMW H2R hydrogen-fueled racer is built. It goes on to set nine world land speed records, reaching a top speed of 187.2 mph.

2004 BMW H2R hydrogen-fueled racer is built. It goes on to set nine world land speed records, reaching a top speed of 187.2 mph.



1968 The unforgettable 2002 set the pattern for both the 3 Series and the 1 Series. The 130-hp 2002tii of 1972 boasted fuel injection and a top speed of 118 mph.



1991 Xenon headlights produce more than twice as much light as halogens, while using only half as much energy. With their brilliant clarity, they also provide an added margin of safety for drivers.



2007 BMW Hydrogen 7 is the first hydrogen-powered luxury-performance car. BMW has lent the Hydrogen 7 to ecology-oriented opinion leaders in many different fields.



1929 BMW’s first car: the Dixi 3/15. This 15-hp two-door cabriolet won many European rallies and established BMW as one of the most reliable cars of its time.



1972 BMW Motorsport GmbH (known today as BMW M) was founded. Since the 1980s, the M3 has become one of the most successful production racers in Motorsport history.

1994

A 3 Series is the first BMW model to roll off the production line at BMW’s first U.S. plant in Spartanburg, SC. The plant produced the Z3 roadster and coupe, M roadster and coupe, Z4 Roadster and Coupe, and currently produces the X5 SAV.



2009

BMW Advanced Diesel with BluePerformance makes its U.S. debut. This award-winning technology, used in the 335d and X5 xDrive35d, offers quiet, smooth and powerful performance with outstanding fuel efficiency and low emissions.



1936 The 328 made its debut winning at the Nürburgring. In the 1940 Mille Miglia, special-bodied 328s competed in this 1,000-mile race, taking first, third, fifth and sixth place.



1978

The 7 Series was one of the first cars in the world

to feature Anti-lock Braking System (ABS). In 1986, BMW was the first automotive company in the U.S. to include ABS as standard across its entire model line.



1995

Dynamic Stability Control (DSC) helps improve performance on curves and slippery roads. If sensors detect oversteer or understeer, it modulates engine power and applies individual brakes to keep the vehicle under control.



2010

Drawing on TwinPower Turbo V-8 engines, electric motors and high-performance batteries, the ActiveHybrid X6 and ActiveHybrid 7 take BMW EfficientDynamics to the next level. The world’s fastest hybrid automobile, the ActiveHybrid 7 gets up to 15% better fuel efficiency than the 750i or 750Li.



AT BMW, ENVIRONMENTAL LEADERSHIP IS JUST ONE MORE FACET OF BEING AN AUTOMOTIVE PIONEER.

BMW manufacturing plants are designed and built to impact the environment as little as possible. Modifications are regularly put into place to reduce the amount of water, power and raw materials needed to run them. Additionally, ways are found to create new vehicle parts from recycled materials, and recycle old vehicle parts when they're no longer usable.

According to the Environmental Defense Report,¹ from the years 1990 – 2005, BMW reduced its fleet emissions 12.3 percent, even while increasing U.S. sales fourfold. Because

of its environmental, economic and social performance, BMW has been the automotive industry leader in sustainability for five years running on the Dow Jones Sustainability Indexes (DJSI). It's the only automotive company to be listed every year since the DJSI was established in 1999. And in 2007 the U.S. Environmental Protection Agency gave BMW and its partner, Dürr Systems, the "Energy Partner of the Year" Award for their achievement in implementing one of the most successful Landfill Gas-to-Energy Projects in North America.

¹ 2007 Environmental Defense Report.



1990 – 2005
BMW reduced emissions of its U.S. fleet by 12.3%, more than any other car brand.



2000
The birth of BMW EfficientDynamics – the art of creating less emissions with more driving pleasure.



2001
BMW introduces its revolutionary Valvetronic technology, making BMW engines more efficient.



2005 – 2008
BMW named "The world's most sustainable automotive manufacturer." Not once, but four years in a row.



2006
State-of-the-art Spartanburg, SC production plant is named "Energy Partner of the Year 2006."



2007
The premiere of the BMW Hydrogen 7 Series, the world's first hydrogen performance sedan.



2008
BMW 118d awarded "2008 World Green Car of the Year."



2008
Introduction of BMW Advanced Diesel – 35% better MPG, 20% less CO₂. It's diesel like never before.



2009
Kelley Blue Book's kbb.com names BMW 335d a "2009 Top 10 Green Vehicle." Diesel by BMW is a beautiful thing.



2010
BMW reinvents the hybrid with ActiveHybrid, extending its alternative fuel lineup. The future looks greener than ever.

JOY LOWERS EMISSIONS IN THE NAME OF MORE POWER. BMW EFFICIENT DYNAMICS.

For over a quarter century, BMW has been working toward a future where cars run on sustainable fuels and emit nothing more harmful than water vapor.

In the past, others may have considered this an impossible dream. But today it's reality, thanks to BMW EfficientDynamics.

BMW's idea for the first pillar of the EfficientDynamics program was to continually optimize the gasoline combustion engines currently in use. The goal: to maximize power and fuel economy while minimizing emissions. This has resulted in advanced technologies, such as BMW engines with Valvetronic "breathing," and turbocharged engines with high-precision fuel injection.

The second pillar: developing vehicles powered by Advanced Diesel engines with BluePerformance Technology. Accounting for two thirds of the BMWs sold in Europe, and over half of the BMWs sold around the world, BMW Advanced Diesel technology has forever changed how drivers think of diesel power. It offers smooth, powerful acceleration, outstanding fuel efficiency, quiet operation and ultra-low emissions. A BMW featuring Advanced Diesel technology received the "2008 World Green Car of the Year" award.

The third pillar of EfficientDynamics is hydrogen power. The hydrogen-fueled BMW H₂R racecar has been clocked at 187 mph, setting numerous land speed records.

Eco-conscious leaders drove Hydrogen 7 Sedans for a limited time in BMW's Hydrogen 7 Pioneer program.

Now BMW has introduced the fourth pillar: ActiveHybrid. Combining advanced combustion engines, electric motors and high-performance batteries, ActiveHybrid vehicles deliver full-bodied acceleration while reducing fuel consumption and emissions.

تلفن: ۰۲۱-۸۸۸۶۲۰۸۵

FarmaSOS.com





THE EFFICIENCY OF A FOUR-CYLINDER. THE PERFORMANCE OF A V-8. BMW ADVANCED DIESEL WITH BLUE PERFORMANCE TECHNOLOGY.

We are entering an exciting new era in driving technology – and helping to lead the charge is BMW's Advanced Diesel with BluePerformance Technology. This revolutionary approach to diesel power provides a more efficient "alternative to the alternative" and, just as importantly, makes no compromises when it comes to performance.

The 335d Sedan and X5 xDrive35d SAV[®] are powered by Advanced Diesel technology. BMW's award-winning 265-hp, 3.0-liter TwinPower Turbo six-cylinder diesel engine delivers the performance of a V-8 with the efficiency of a four-cylinder engine. Generating a formidable 425 lb-ft of torque at just 1750 rpm, it propels the 335d from 0-60 in 6.0 seconds and the X5 xDrive35d in 6.9 seconds.¹ And getting 580 miles of uninterrupted driving pleasure on just one tank isn't merely a fantasy: this advanced engine achieves 36 mpg for the 335d, and 26 mpg for the X5 xDrive35d.²

These Advanced Diesel models deliver the handling and feel you expect from a BMW. But their impressive performance is not just a reward for the driver. With BluePerformance Technology and other advances, emissions are 20 percent lower than comparable six-cylinder gasoline engines, and meet emissions standards for all 50 states.

BMW's BluePerformance filtration system traps and burns the tiniest nitric oxide emissions particles and incinerates them, without reducing engine power or increasing

fuel consumption. The exhaust gas is then treated with an odorless cleaning solution that converts any remaining nitric oxides into nitrogen and water vapor. When the exhaust is released through the tailpipes, a silencer reduces the noise to a minimum. So not only are you making fewer trips to the pump, the fuel you're using has a diminished effect on the environment.

When it comes to power, efficiency and emissions, no other inline six-cylinder diesel engine performs like a BMW Advanced Diesel engine.

Where can one tank take you? Drive and find out.

RESPONSIVE, YET RESPONSIBLE.

BMW Advanced Diesel power is set to reignite driving passion – but it's also about responsibility. Here are just a few of the ways that BMW Advanced Diesel is set to change more than just ultimate driving joy:

Drive longer: BMW 335d drivers will enjoy a range of up to 580 miles on a single tank; BMW X5 xDrive35d drivers, up to 585 miles without refueling.

Save money: With greater mpg, the cost of upgrading from a gasoline to a diesel engine could pay for itself in just a few years. There's also a potential tax credit of \$900 for the 335d, and \$1800 for the X5 xDrive35d.³

Conserve resources: Converting just one-third of BMW's U.S. automotive fleet to clean diesel power would save up to 1.4 million barrels of oil per day.

Keep it clean: BMW's 6-cylinder Advanced Diesel engine offers the lowest CO₂ emissions in its class.

Fuel-proof: BMW's special fuel-filler design accommodates only diesel nozzles, preventing gasoline from being pumped in the tank accidentally.

¹ BMW AG test results. BMW urges you to obey all posted speed laws and always wear safety belts.

² EPA-estimated figures are for comparison purposes only. Your actual mileage will vary, depending on speed, driving habits, trip length and driving conditions; actual mileage may be lower.

³ As per fuelconomy.gov/feg/tax/LeanBurn.shtml. Please check with a tax advisor to determine your eligibility for a tax credit.





JOY WANTS MORE MPH. MORE MPG. AND LESS CO₂. BMW ACTIVE HYBRID.

Leading the charge in next-generation power is BMW ActiveHybrid. Offered in two separate hybrid concepts, this highly intelligent form of energy management combines the power of a combustion engine along with the most efficient hybrid components. The result is the “Best of Hybrid.”

The ActiveHybrid 7 is the world’s fastest hybrid, rocketing from 0-60 in just 4.7 seconds.¹ Its engine and single electric motor work closely together, maintaining current speed, generating electricity to run various features, and providing bursts of power for quick acceleration. When compared to similar combustion-powered 7 Series models, the ActiveHybrid 7 is up to 15 percent more efficient.

The ActiveHybrid X6’s two electric motors and V-8 TwinPower Turbocharged engine can be used separately or together. At start-up and for a brief period up to 40 mph, the two electric motors draw on a compact nickel-metal hydride battery to deliver the greatest rush of torque in any hybrid vehicle – then the

V-8 engine kicks in. Working together, the engine and motors generate 480 hp and 575 lb-ft of torque, for 0-60 acceleration in 5.4 seconds.² Compared to the X6 xDrive50i, the ActiveHybrid X6 is up to 20 percent more efficient.

Adding to BMW ActiveHybrid efficiency, the Brake Energy Regeneration feature stores unused energy when braking or coasting. This is used by the electric motor to give short power boosts to the V-8 engine when needed, such as when passing on an uphill grade, without using extra fuel. And when an ActiveHybrid vehicle is at a standstill, the Hybrid Start/Stop function temporarily switches off the V-8 engine and runs the electric functions, for greater efficiency.

ActiveHybrid technology: BMW’s newest formula for greater efficiency, lowered emissions and thrilling BMW performance.

¹ BMW AG preliminary test results, ActiveHybrid 750i; 4.8 seconds, ActiveHybrid 750Li. BMW urges you to obey all posted speed laws and always wear safety belts.

² BMW AG preliminary test results. BMW urges you to obey all posted speed laws and always wear safety belts.

انداز خودرو و فناوریها

تلفن شبانه روزی: ۰۲۱-۸۸۸۶۲۰۸۵

FarmaSOS.com

BMW TECHNOLOGY INNOVATIONS:¹

Active Blind Spot Detection uses radar sensors at the rear to monitor traffic in adjacent lanes, covering an area from the driver's blind spot rearward for nearly 200 feet. If there is a vehicle in this critical area, an illuminated triangular warning LED appears in the side-view mirror.

Active Cruise Control with Stop & Go maintains a set speed. Radar technology detects the distance between your BMW and the vehicle in front of you, and smoothly slows you down to your selected following distance. It can even bring your BMW to a stop, if needed. Once traffic allows, your BMW automatically returns to its preset speed.² At all times, the Forward Collision Warning feature¹ sounds an alert if you are approaching the vehicle ahead of you too quickly.

BMW Search features online access to the Google Maps™ database. Additionally, you can check up-to-the-minute weather forecasts, local fuel prices, and stock indices.³

7-speed Double Clutch Transmission (DCT) is quicker and more efficient than a traditional automatic transmission. It houses two groups of gears in one structure. When upshifting or downshifting, the system switches between

the two groups. While one gear is being disengaged, the next is already in position.

Driving Dynamics Control offers up to four different levels of performance: COMFORT, NORMAL, SPORT and SPORT+. System sensors “read” the road while you drive, then automatically adjust shock absorption, shift feel, throttle response and more to your desired mode.

Dynamic Performance Control combines the stability of BMW's xDrive intelligent all-wheel drive with a lateral power distribution system for the rear wheels. Vehicle traction and control are optimized even in the most difficult driving conditions, while preserving the dynamic driving characteristics for which BMW is known.

Integral Active Steering changes the amount of steering input needed, based on vehicle speed. At lower speeds, a small turn of the steering wheel yields a greater turn of the front wheels. The rear wheels steer in the opposite direction, for quicker turns and easier parking. Over 50 mph, a larger turn of the steering wheel is needed. Both front and rear wheels turn in the same direction, for greater stability when changing lanes.

Lane Departure Warning is an active safety feature that vibrates the steering wheel if you've crossed into the next lane without using the directional signal first.⁴

MyInfo allows you to send business locations and street addresses with associated phone numbers from Google Maps directly to your BMW.⁵

Night Vision with Pedestrian Detection uses an infrared camera that can scan up to 980 feet ahead; it can detect pedestrians up to 300 feet away. If a person is walking parallel to the road or crossing it, the system displays their presence on the Navigation system monitor, giving you greater response time.⁶

Xenon Adaptive Headlights help you to see around curves more quickly when driving at night. Sensors determine the direction in which you're heading; the brilliant Xenon headlights swivel accordingly. **Cornering Lights** project an even wider angle of light to the side when turning tight corners.

Top View Camera feature uses cameras located in each exterior mirror to provide video images of the road alongside the doors, which are displayed on the on-board Control Display.



امداد خودرو فارما

تلفن شبانه روزی: ۰۸۵-۸۸۶۲۰۲۱

FarmaSOS.com



BMW Hydrogen 7 was introduced in model year 2008. Driven by environment-conscious leaders in a variety of fields, it is the world's first luxury-performance automobile to run on both hydrogen and gasoline without a perceptible difference in performance. (To change from one fuel to the other, press a button on the steering wheel.) In hydrogen-fuel mode, emissions are virtually zero: a small haze of water is emitted from the exhaust. Using both tanks, the vehicle range is approximately 425 miles: 125 miles on hydrogen and 300 miles using gasoline.

BMW Group Research and Technology, which is responsible for the development of the BMW Hydrogen 7, is coordinating a project to develop innovative concepts for hydrogen-fueled vehicles. BMW is also an important partner in establishing a chain of hydrogen fueling stations across Europe and the U.S. Today, hydrogen fuel is available in more than two dozen countries and half of the U.S.

¹ Not all features available in all BMW models. See your authorized BMW or BMW SAV® center for details.
² Active Cruise Control is not a substitute for the driver's own responsibility in adjusting the speed and otherwise controlling the vehicle. After evaluating road, traffic and visibility conditions, the driver must decide whether and how the system is used. Requires STEPTRONIC automatic or Sport Automatic transmission.
³ Requires BMW Assist™ and Bluetooth® System, optional BMW Assist Convenience Plan, and Navigation system. For model availability and BMW Assist program details, call toll-free 1-888-333-6118, log on to bmwassist.com or visit your authorized BMW or BMW SAV center.
⁴ Requires clearly definable lane markings that are not obscured by rain, snow, etc. Lane Departure Warning feature is not a substitute for the driver's own responsibility in maintaining safe control of the vehicle.
⁵ Requires BMW Assist and Bluetooth System and Safety Plan enrollment. For model availability and BMW Assist program details, call toll-free 1-888-333-6118, log on to bmwassist.com or visit your authorized BMW or BMW SAV center.
⁶ Under optimal road conditions. Night Vision performance is also limited by rain, fog, humidity and other weather conditions. Requires Navigation system and, in some models, optional Cold Weather Package.

WHICH ONE COSTS MORE TO MAINTAIN?

Thanks to BMW Ultimate Service,TM scheduled service inspections and virtually every wear-and-tear item are covered for four years/50,000 miles, whichever comes first. All at no additional cost to the owner.¹ Just one more reason BMWs continue to stay at the top of their class when it comes to low cost of ownership – and high resale values.

See what you'll save in maintenance costs over 4 years, according to Edmunds.com.¹

BMW ULTIMATE SERVICETM

- \$0 | Brake pads
- Brake rotors
- Oil changes
- Engine belts
- Wiper blades

BMW
\$0



Audi A4
\$1,674



Lexus IS
\$1,974



MB C-Class
\$2,179

¹ Maintenance cost for the Audi A4, Mercedes-Benz C-Class, and Lexus IS 250 is Edmunds.com's estimate as of January 26, 2010 of the national average maintenance cost for a representative MY 2010 style for the first four years of ownership (assuming 50,000 miles driven). Actual costs will vary. Call 1-888-311-4BMW for no-cost maintenance details.

JOY BELIEVES IN LONG-TERM COMMITMENT. BMW ULTIMATE SERVICE.^{TM2}

While most luxury carmakers are cutting their maintenance programs, BMW adds value to your vehicle through the no-cost benefits of BMW Ultimate Service.

The BMW Maintenance Program² remains one of the only no-cost maintenance programs in the industry. For four years or 50,000 miles from the original in-service date of the vehicle, whichever comes first, you pay nothing for all scheduled inspections, oil changes, brake pads, wiper blade inserts and other wear-and-tear items. And thanks to advanced BMW technology, you may need to bring your BMW in for routine inspections only about once a year, saving you time, as well as money.

BMW Roadside Assistance is one of the industry's most comprehensive plans available. Not only is it no-charge for the first four years, there is no mileage limit.

So no matter what the odometer reads, you enjoy the assurance of on-the-road help 24/7, anywhere in the United States, Canada and Puerto Rico.

BMW New Vehicle Limited Warranty covers your BMW for four years or 50,000 miles, whichever comes first. This includes limited coverage for defects in materials or workmanship. And, should your vehicle require attention, only Original BMW Parts are used, assuring you that your BMW will continue to perform like a BMW.

BMW AssistTM Safety Plan³ provides services that enhance your on-the-road peace of mind. These include Automatic Collision Notification, Enhanced Roadside Assistance, Door Unlock, Stolen Vehicle Recovery and more. MyInfo lets you send business locations and street addresses with their phone numbers from the Google MapsTM website

directly to your BMW and its Navigation system. The BMW Assist Safety Plan is included for four years with all new vehicles equipped with the BMW Assist and Bluetooth[®] system – another industry first.

TeleService⁴ monitors and transmits your vehicle's operating condition and service needs to your BMW center. The center then calls you to schedule a convenient time to bring in your BMW for service.

² All BMWs come with the BMW Maintenance Program and Warranty standard for 4 years or 50,000 miles, whichever occurs first. Roadside Assistance comes standard for 4 years. BMW Assist Safety Plan comes standard for 4 years on every 2010 and later M5, M6, X5 M, X6 M, 5 Series, 6 Series and 7 Series, and is available as part of the Premium Package or as a stand-alone option on all other 2010 and later models.

³ For BMW Assist program details, call toll-free 1-888-333-6118, log on to bmwassist.com or visit your authorized BMW or BMW SAV[®] center.

⁴ BMW Assist TeleService is included in all 2010 and later models, except the X3; included in model year 2011 and later X3.

BMW Ultimate Service coverage applies only to U.S.-specification BMWs imported and distributed by BMW of North America and sold or leased through authorized BMW centers or its European Delivery program. Vehicles purchased or leased from BMW centers in any other country do not qualify for BMW Ultimate Service.

ایجاد خودرو فارما
شماره تماس: ۰۲۱-۸۸۸۶۲۰۸۵
FarmaSOS.com





امداد خودرو فارما

تلفن شبانه روزی: ۰۲۱-۸۸۸۶۲۰۸۵

parmaSOS.com

JOY DOESN'T DRIVE YOU. IT MOVES YOU. THE BMW 1 SERIES.

Joy revels in the act of driving. And the BMW 1 Series is driving in its purest form. In the 135i, experience the captivating rush of a 300-hp, TwinPower Turbo six-cylinder engine. Or, brace yourself for the thrills of the 128i's 230-hp six-cylinder powerplant. Both come standard with a slick-shifting 6-speed manual transmission. The 135i also offers a new 7-speed Double Clutch Transmission with steering wheel-mounted paddle shifters. Those who choose the 128i can opt for a 6-speed STEPTRONIC automatic. A sophisticated suspension system works in tandem with BMW's Dynamic Stability Control (DSC) and Dynamic Traction Control (DTC) to ensure stable yet responsive driving dynamics.

The 1 Series' compact yet powerful body shows off its long front hood, long wheelbase

and attractive shoulder line. For a sportier driving experience, the 135i Coupe features a dynamic Aero kit and integrated trunk-lid spoiler to match its sport suspension and high-performance brake system. Or, open yourself up to the unparalleled exhilaration of top-down driving with the 128i or 135i Convertible.

Inside, luxurious optional Boston Leather upholstery and rich-looking trims add an elegant note. An optional Navigation system with iDrive and six programmable memory buttons puts convenience at your fingertips. And, new for 2011, an optional Harman Kardon Surround Sound System fills the cabin with true-to-life audio.

The 1 Series is ready. Start the engine – and take off on a drive you'll hope never ends.



135i Coupe shown in optional Sedona Red Metallic.
128i Convertible shown in optional Cashmere Silver Metallic with optional Sport Package and Xenon headlights.



JOY IS ADORED. THE BMW 3 SERIES SEDAN AND SPORTS WAGON.

The 3 Series is the icon of driving joy. We're proud it has achieved a place on *Car and Driver's* "10Best" list for an unprecedented 19 years running.¹ And it's even better for 2011.

In both profile and power, the 3 Series Sedan and Sports Wagon boast class-leading figures. In the Sedan, power comes in a choice of three inline six-cylinder engines. Thanks to a new 300-hp TwinPower Turbo, the 335i propels your driving joy from 0-60 in 5.4 seconds² and needs less fuel than before. The 335d, featuring Advanced Diesel with BluePerformance technology, gets up to 580 miles on a single tank. This TwinPower Turbo delivers the off-the-line performance of a V-8 and the efficiency of a four-cylinder, while adhering to the emissions standards of all 50 states. In the 328i Sedan and Sports Wagon, a smooth, 230-hp magnesium/aluminum composite engine offers muscle

to spare. For an even more dynamic appearance and performance, add an optional Sport or M Sport Package.

Among the 3 Series' array of active safety features, the Dynamic Stability Control (DSC) system with Dynamic Traction Control (DTC) provides advanced braking control that automatically corrects over- or understeer within milliseconds. Standard run-flat tires let you travel with a puncture up to 150 miles at 50 mph.³ And Xenon Adaptive Headlights with signature Corona headlight-rings clearly illuminate the road ahead and around corners.

Inside, luxury abounds with upholstery options like Oyster Dakota Leather and a choice of beautiful trims. Rich, full audio fills the cabin with the optional new Harman Kardon Surround Sound system.

In the 3 Series Sports Wagon, the standard oversize Panoramic moonroof lets the sun shine in on five comfortable adults. In terms of cargo capacity, BMW's smart design maximizes usable space, while a separately opening rear window adds convenience. Optional roof rails, a vertical cargo net divider, and a cargo cover help you prepare for your trip.

The 328i xDrive and 335i xDrive models feature BMW's intelligent all-wheel-drive system. This varies the amount of torque sent to the front or rear axle, as needed – adding outstanding traction to the BMW 3 Series' already gripping performance.

¹ *Car and Driver*, "10Best" Cars, January 1992–2010.
² BMW AG test results, 335i with manual transmission; 335i xDrive, 5.3 seconds with manual transmission. BMW urges you to obey all posted speed laws and always wear safety belts.
³ Travel distance varies with load.

328i Sports Wagon shown in optional Space Gray Metallic with optional Sport Package, Cold Weather Package, roof rails and Park Distance Control.
 335i Sedan shown in optional Blue Water Metallic, with optional Sport Package and Park Distance Control.

فارما سوس فارما

تلفن شبانه روزی: ۰۲۱-۸۸۸۶۲۰۸۵

FarmaSOS.com





JOY IS 34 YEARS IN THE MAKING. THE BMW 3 SERIES COUPE AND CONVERTIBLE.

Sporting new looks, a new engine and even a new, higher-performance model, the 3 Series Coupe and Convertible for 2011 energize an award-winning formula.

Striking new lights feature LED Corona headlight rings and LED taillight treatments. There is a new hood design and kidney grille, side skirts, wheels, and new front and rear fascias.

Under the hood, the 335i is equipped with a new, more fuel-efficient engine: BMW's 300-hp TwinPower Turbo inline six. A lightweight magnesium/aluminum engine in the 328i produces grin-inducing levels of power. The 328i and 335i Coupes are also available with BMW's xDrive intelligent all-wheel drive.

The new 335is High Performance model packs a 320-hp TwinPower Turbo engine with 332 lb-ft of torque. Punch the accelerator and 370 lb-ft of torque boost kicks in, to the roar of the sports-tuned exhaust system. Its prowess is heightened by M Sport enhancements inside and out – upgrades that are also included in the 328i and 335i M Sport Package. A 7-speed sport automatic Double Clutch Transmission, optional in the 335is, delivers pavement-peeling acceleration and enhanced efficiency; steering wheel-mounted paddle shifters complete the sport driving experience.

The spacious interior is designed to delight four adults with its elegant materials, expert workmanship, and luxurious amenities, such as dramatic Ambiance lighting.

In the Convertible, front-seat-integrated safety belts allow easy access to and from the rear cabin. For added comfort in hot weather, BMW's Sun-Reflective Technology helps keep the Dakota Leather-upholstered seats¹ cooler longer. The Convertible also features a retractable hardtop that neatly stacks, then stores in the trunk. To load items in the trunk when the top is down, a Convenience Opening and Loading feature² lifts the roofstack up and out of the way at the touch of a button. The rear seats also fold down for increased cargo-carrying capacity.

A fresh look and even more dynamic performance: the 3 Series Coupe and Convertible.

¹ Standard in 335i Convertible; optional in 328i Convertible.
² Included with optional Comfort Access.

ایراد خود را

تلفن شبانه روزی: ۰۸۵-۸۸۸۶۲۰۳۱

FarmaSOS.com



335i Coupe shown in optional Vermillion Red Metallic with optional Sport and Cold Weather Packages.
335i Convertible shown in optional Deep Sea Blue Metallic with optional Sport and Cold Weather Packages.



JOY IS A MODEL OF PERFECTION. THE BMW 5 SERIES SEDAN.

From the powerful front end to the expressive contours to the signature Hofmeister kink at the back, each detail of the all-new 5 Series Sedan is a vital component in a dynamic visual symphony.

But its beauty is more than skin-deep. No fewer than three engine choices offer classic pulse-raising BMW performance – including, in the 550i, a stunning 4.4-liter, 400-hp TwinPower Turbocharged V-8 engine with High Precision direct injection. A new 8-speed automatic transmission not only harnesses this power perfectly, it also enhances fuel efficiency. The Brake Energy Regeneration system captures the kinetic energy used in slowing and stopping maneuvers, and stores it in the battery. Additional advances in BMW EfficientDynamics include Electric Power Steering, which only activates during actual steering maneuvers; and Air Vent Control, which directs airflow to the engine, enhancing efficiency and cooling.

BMW continues the elegance of the exterior in the luxurious, comfortable interior. A wealth of modern trim choices, like Dark Burl Ash and Finition Matte, complement supple leather upholsteries, such as the opulent option of plush Nappa Leather.

BMW's Extensive Black Panel technology encompasses the dash, making it easy to scan important driving information. Grab the fourth-generation iDrive Controller and plot your course on the large, integrated 10.2-inch screen. This hi-res monitor can also display visuals from the new Top View and Side-view Cameras, which provide visual assistance for parking and maneuvering in tight spaces.

Powered by innovation and inspired by joy: the all-new 2011 BMW 5 Series is an exploration of beauty.

535i Sedan shown in Space Gray Metallic with optional Cold Weather Package and Park Distance Control. European interior shown in Dakota leather with Veneto Beige interior trim and Finition Anthracite wood.





European interior shown in Ivory White Dakota Leather with sun protection glass and Panoramic glass moonroof.

امداد خودرو فارس

تلفن شبانه روزی: ۰۲۱-۸۸۸۶۲۰۸۵

FarmaSOS.com

ELEGANCE HAS A NEW POINT OF VIEW. THE BMW 5 SERIES GRAN TURISMO.

Skillfully blending the performance of a sporty coupe, the elegance and comfort of a sedan, and the versatility of an SAV,[®] the 5 Series Gran Turismo is a multi-talented vehicle that raises driving joy to even greater heights.

A dynamic silhouette and bold lines accentuate the 5 Series Gran Turismo's sporty nature, while its low-slung kidney grille, large lower air intake, and headlights that taper back with LED Corona headlight-rings underscore its serious performance. BMW also offers two new exterior colors, Milano Beige and Damask Red.

Tucked under the hood of the 400-hp 550i and 550i xDrive Gran Turismo lies a 4.4-liter TwinPower Turbo V-8. Breathtaking acceleration comes courtesy of 450 lb-ft of torque that peaks at just 1750 rpm, then continues all the way to 4500 rpm. In the 535i Gran Turismo, acceleration is delivered via a 300-hp TwinPower Turbo inline six. Both

channel energy efficiently through an 8-speed STEPTRONIC automatic transmission. The 550i xDrive Gran Turismo also offers the outstanding all-road traction of xDrive intelligent all-wheel drive.

The spacious cabin offers remarkably comfortable seats with the option of being heated or cooled. With elevated seating positions and a Panoramic moonroof that looks up to the skies, all occupants enjoy optimum light and visibility. Elegant handcrafted leather surfaces are set off by a choice of beautiful wood trims. Touch the Start button, and the dash with Black Panel technology springs to life, as round instrumentation with status displays glowingly appear.

The 5 Series Gran Turismo is also amazingly versatile. Standard rear seats accommodate three occupants; the two outer seats offer adjustable backrests. Optional power rear

Comfort seats, which hold two passengers, can be moved fore or aft by more than 3.9 inches. With seats moved all the way back, tall passengers can stretch out while leaving up to 15.5 cu. ft. of storage space. Move the rear seats forward for 20.8 cu. ft. of storage. Push a button and the rear seats automatically fold down, creating 60 cu. ft. of room to hold all your cargo.

BMW has created an ingenious dual-access tailgate for the 5 Series Gran Turismo. Use the low-loading sedan-type trunk lid to stow smaller items without letting in wind or unconditioned air. For loading larger items with ease, the entire tailgate can be lifted.

To those who seek groundbreaking style, luxury and performance along with space and practicality, allow us to introduce your next car: the BMW 5 Series Gran Turismo.

European model shown in Neptune Blue Metallic.

STAND OUT FROM THE CROWD. THE BMW 6 SERIES COUPE AND CONVERTIBLE.

When BMW designers and engineers created the 6 Series Coupe and Convertible, they struck a perfect balance of sophistication, luxury and breathtaking performance.

The 6 Series' visual allure is matched by its joy-inducing athleticism: the smooth, potent V-8 acceleration of 360 horses and 360 lb-ft of torque; its surgically precise handling; and BMW's physics-defying Active Roll Stabilization feature that grips corners tight while keeping the body level. The optional Sport Package adds a contoured hood and black-chrome exhaust tips that trumpet an aggressive exhaust note, 19" forged alloy wheels, shadowline trim, and two exclusive paint choices; inside, sport seats and an Alcantara headliner.

As one would expect of The Ultimate Driving Machine®, the 6 Series' sports-car

performance is combined with an interior that is a study in bespoke elegance. The cabin seats four; the trunk easily accommodates two golf bags.¹

When you lower the 650i Convertible's fully automatic, triple-lined, insulated softtop, you enjoy unlimited sky, while BMW's Sun-Reflective Technology helps keep seats cool. The heated glass rear window can be operated independently of the roof as a wind deflector. A Rollover Protection System and reinforced windshield add to BMW's industry-leading safety features.

A powerful expression of technological innovation, premium quality and unerring style, the BMW 6 Series is a shining example of the quest for excellence.

¹ 650i Coupe; 650i Convertible with softtop down.



650i Convertible shown in Space Gray Metallic with front-seat Active Head Restraints and Park Distance Control.
650i Coupe shown in Deep Sea Blue Metallic.





750Li Sedan shown in Cashmere Silver Metallic with optional 19" wheels. 750i interior shown in Oyster Nappa Leather upholstery with optional Ash Grain Wood trim and Rear Entertainment Packages.

امداد خودرو فارما
تلفن شبانه روزی: ۰۲۱-۸۸۸۲۰۸۵

FarmaSOS.com

THE FLAGSHIP IS NOW A FLEET. THE BMW 7 SERIES SEDAN.

For sheer luxury, power and performance – and now, breadth of choices – the 2011 7 Series stands alone. A showcase of artistic and engineering mastery, the 760Li introduces BMW's latest technological innovations, while offering every luxurious amenity imaginable. Under the hood, a 535-hp V-12 TwinPower Turbo is harnessed to an 8-speed transmission. The 400-hp 750i and long-wheelbase 750Li are available with either rear-wheel drive or with the added grip of xDrive intelligent all-wheel drive. And the all-new 500-hp ALPINA B7 adds performance enhancements as well as 21" signature alloy wheels and exclusive choices in upholstery, colors and trim.

New for 2011 are two of the world's most powerful six-cylinder luxury sedans: the 740i and 740Li, featuring the 315-hp TwinPower Turbo. BMW also debuts the world's fastest hybrid automobiles: the ActiveHybrid 750i and ActiveHybrid 750Li, which achieve up to

15 percent greater fuel efficiency than their V-8 powered counterparts.

All 7 Series models are utterly responsive and nimble, thanks to near-perfect 50/50 weight distribution and extensive lightweight components throughout. Narrowing the gap between driver and vehicle, Driving Dynamics Control offers four different settings to change the ride and handling: COMFORT, NORMAL, SPORT and SPORT+. Optional Active Cruise Control with Stop & Go automatically maintains a preset distance to the vehicle ahead, enhancing your driving experience in heavy traffic. A new Top View Camera in the Camera Package,¹ as well as Active Blind Spot Detection in the Driver Assistance Package,¹ give a better view when parking or changing lanes.

Inside the spacious cabin bathed in elegant Ambiance lighting, a world of matchless luxury awaits. The dramatic Black Panel display dashboard springs to life once you hit the Start button, helping you keep track of

vital driving information. The 20-way power front Comfort seats, swathed in supple Nappa Leather, are complemented by rich wood trim. The iDrive has 12 GB of hard-drive space for music and media; eight programmable memory buttons put your favorite music, Navigation addresses and phone numbers conveniently within reach.

Long-wheelbase models are differentiated not just by their length but also by their sleek, coupe-like silhouette. Those traveling in back will appreciate the optional rear-seat entertainment system, complete with individual 8-inch color screens. An optional Luxury Rear Seating Package adds Comfort rear seats with ventilated and massaging features.²

From its commanding power to its many pleasures, the 7 Series is an automotive masterpiece by any definition.

¹ Standard in 760Li; optional in all other 7 Series models.

² 760Li: rear ventilated Comfort seats are standard; massaging feature is optional.

JOY IS AN ARTIST. THE BMW Z4 ROADSTER.

In a roadster, open-sky freedom is served up in classic two-seater form. The BMW Z4 Roadster, with its long hood and low-slung stance, adds stunning beauty inside and out. For 2011 there is the new M Sport Package and even a new, higher-performance model.

The Z4 offers a choice of inline six-cylinder engines: a 300-hp TwinPower Turbo in the Z4 sDrive35i, and in the Z4 sDrive30i, a lightweight 255-hp engine. A third choice, the new Z4 sDrive35is, is one of BMW's fastest roadsters ever. Its thrilling acceleration comes via a 320-hp TwinPower Turbo, whose 332 lb-ft of torque can be increased to 369 lb-ft with the standard overboost function. M Sport features, like an Adaptive Sport Suspension, add to its sporty performance.

In addition to the standard 6-speed manual, the Z4 sDrive35i offers, as an option, the lightning-quick 7-speed Double Clutch Transmission that is standard on the Z4 sDrive35is. A 6-speed Sport Automatic is optional on the Z4 sDrive30i. All automatics include steering wheel-mounted paddle shifters.

BMW's best-in-class chassis delivers precise handling and sheer fun. Driving Dynamics Control activates three driving modes at the press of a button: NORMAL, SPORT and SPORT+. These tailor steering, throttle and Dynamic Traction Control response to your driving style. In vehicles with Adaptive M Sport Suspension, the same button also provides the option of a firm, sporty ride, or one with an enhanced level of comfort.

When the mood arises, lower the retractable hardtop in just 20 seconds. Or raise it and enjoy the all-year comfort and security of a quiet, climate-controlled cabin. Top-up, taller drivers will appreciate the additional headroom and improved ease of entry and exit. With over 40 percent more glass than its predecessor, it offers a greater sense of spaciousness and enhanced peripheral vision.

The cabin is filled with an array of high-quality upholsteries and interior trims; different materials accentuate the driver- and passenger-side dash. The optional Exclusive Ivory White Leather Package lavishes the specially bolstered sport seats in supple Ivory White Nappa Leather, set off by Anthracite Wood interior trim. Among the many features of the optional Navigation and iDrive system are a choice of maps, including 3-D and nighttime views; 12 GB of hard-disk space for your favorite music; and a high-resolution monitor that pops up from the dash.

The Z4 Roadster offers ample storage capacity. Behind the seats is a storage bench – a unique feature in this class of vehicle. The Z4 is also the only retractable-hardtop roadster with an optional through-loading system and integrated transport bag. With the roof down, the trunk can store two pairs of skis or a 46-inch golf bag; roof up, it holds two 46-inch golf bags.

The 2011 Z4 Roadster: even greater driving bliss in the ultimate expression of joy.



Z4 sDrive35i shown in optional Deep Sea Blue Metallic with optional Sport and Cold Weather Packages and Park Distance Control. Interior shown in optional Ivory White Nappa Leather upholstery with Sport Automatic transmission and Navigation system.



امداد خودرو فارما
تلفن شماره رزی: ۰۸۵-۸۸۶۲۰۲۱
FarmaSOS.com



X3 xDrive30i shown in optional Titanium Silver Metallic with optional Privacy glass. Interior shown in optional Sand Beige Nevada Leather upholstery with Light Poplar Wood trim, optional automatic transmission, Sport Package and Navigation system.

JOY LOVES WEATHER – THE WORSE, THE BETTER. THE BMW X3 XDRIVE30i.

Let the winds howl and blizzards blow. The X3 xDrive30i was built to deliver rousing performance on any road and in any weather. BMW's 260-hp inline six-cylinder Valvetronic engine delivers spirited acceleration. A choice of 6-speed manual or STEPTRONIC automatic transmissions transfer this power to the road, where xDrive intelligent all-wheel drive helps keep the SAV® firmly on course. Further aiding traction is Dynamic Stability Control (DSC). This includes active safety features such as Brake Drying, which automatically dries brake pads whenever a sensor detects water.

Desirable standard features, such as sporty 17" V Spoke alloy wheels and interior wood trim choices, add to your joy of ownership. The well-crafted cabin welcomes five adults

with wide-open space – a feeling heightened by the large, two-piece optional Panoramic moonroof. Large storage bins, interior cargo rails and non-slip flooring make cargo storage a breeze. Personalize it further with the optional Sport Activity Package, which includes privacy glass, a three-spoke leather-wrapped multi-function sport steering wheel, running boards and other exciting enhancements. And once you experience the optional heated steering wheel and 16-way power front Comfort seats, you'll consider them more a necessity than a luxury.

With its outstanding traction, agile handling, versatile storage and just-right size, the BMW X3 is the perfect travel companion in a savvy Sports Activity Vehicle.®

JOY BRINGS THE WHOLE CROWD ALONG. THE X5 SAV.®

The only BMW capable of transporting up to seven occupants,¹ the 2011 X5 SAV boasts freshened styling and enhanced efficiency.

The X5 for 2011 comes with a choice of three efficient TwinPower Turbo engines. BMW's Advanced Diesel drives the X5 xDrive35d; this 265-hp inline six packs V-8 worthy torque, delivers 19 mpg city/26 highway,² and meets the strict emissions standards of all 50 states. Two gas-fueled TwinPower Turbo engines channel their energy through an 8-speed automatic transmission. The X5 xDrive50i offers a 400-hp V-8; the X5 xDrive35i gets its energy from a 300-hp inline six. Thanks to High Precision fuel injection and advanced

BMW engineering, both engines are highly fuel efficient and virtually free of turbo lag.

BMW's xDrive intelligent all-wheel drive works with the Dynamic Stability Control system to deliver confident traction, enhanced with braking-assist features. Optional Adaptive Drive³ enhances sporty performance while reducing body roll; optional Active Steering⁴ delivers greater steering response at lower speeds and more stability at higher speeds.

Two new models – the X5 xDrive35i Premium and X5 xDrive35i Sport Activity – are designed to appeal to luxury-oriented and performance-oriented drivers.

The X5 offers one of the widest selections of personalizing options of any BMW. The spacious, leather-filled interior⁵ provides a comfortable way to travel, made even more enjoyable with delightful optional features such as Active Ventilated front seats and a rear-seat entertainment system.

With freshly redefined lines, formidable athletic prowess and versatile comfort, it's clear: the X5 defines the joy of travel.

¹ With optional third-row seating for two; not available in X5 xDrive35i base model.
² EPA-estimated figures are for comparison purposes only. Your actual mileage will vary, depending on speed, driving habits, trip length and driving conditions; actual mileage may be lower.
³ Not available on base model.
⁴ Not available on base model or X5 xDrive35d.
⁵ Optional in X5 xDrive35d; not available in base model; standard in all other models.



X5 xDrive50i Sports Activity Vehicle® shown in Sparkling Bronze Metallic with optional Sport Activity Package, roof rails, running boards and Park Distance Control.



ایراد خودرو فارما

تلفن شبانه روزی: ۰۲۱-۸۸۸۶۲۰۸۱

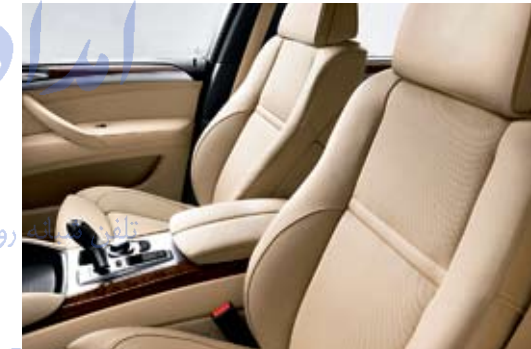
FarmaSOS.com



X6 xDrive50i Sports Activity Coupe shown in Vermilion Red Metallic with optional Sport and Cold Weather Packages, and optional 20" wheels.



Interior shown in optional Oyster Perforated Nevada Leather with Dark Bamboo Wood interior trim, Active Ventilated Seat Package, Cold Weather Package and Navigation system.



Optional Active Ventilated Seat Package in Beige Perforated Nevada Leather with Dark Bamboo Wood interior trim (no-cost option).



60/40 split-folding seat gives you the flexibility to carry any combination of cargo and passengers.

JOY DEVOURS CORNERS FOR FUN. THE X6 SPORTS ACTIVITY COUPE.™

The most surprising thing about the X6 Sports Activity Coupe is just how fast and agile it is.

In the X6 xDrive35i, BMW's new 300-hp TwinPower Turbo inline six with Valvetronic accelerates from 0-60 in 6.3 seconds.¹ A 400-hp TwinPower Turbo V-8 rockets the X6 xDrive50i from 0-60 in 5.2 seconds.¹ Harnessing that same V-8 engine to two electric motors and a high-performance battery, the new BMW ActiveHybrid X6 makes the trip to 60 mph in 5.4 seconds, while achieving up to 20 percent better fuel efficiency. High Precision fuel injection gives all three engines smooth, powerful and efficient performance, with power transferred to the road via a smooth-shifting Sport Automatic transmission, complete with racing-inspired paddle shifters.

The power of the X6 is mated to revolutionary control systems. In addition to the superior traction of xDrive intelligent all-wheel drive, BMW's Dynamic Performance Control intelligently boosts torque to the outside rear wheel during cornering maneuvers,

by redistributing power laterally between the rear wheels. You'll accelerate, not brake, through turns. It's improved driving confidence and joy in one innovative technology.

Inside the cabin, the BMW X6 comfortably seats four amidst a luxurious spread of supple Nevada Leather upholstery, elegant trim, and advanced comfort and convenience features. The optional new Top View feature uses cameras in the side-view mirrors to provide video of the doors and ground along the sides of the vehicle. Together with the optional Side-view Cameras, the driver enjoys a better all-around view. The height-adjustable Head-up Display option projects important driving information at eye level; the optional, independently controlled DVD system entertains rear-seat passengers; and an automatic tailgate option makes loading and unloading a breeze.

In the X6 Sports Activity Coupe, elegance, sportiness and total comfort combine in an uncompromising all-road performer. Uncharted territory never seemed so inviting.

¹ BMW AG test results. BMW urges you to obey all posted speed laws and always wear safety belts.

ایراد خودرو فارس
روزی: ۸۵-۲۸۸۶۲۰۶۱
FarmaSOS.com



امداد خودرو فارما

تلفن شبانه روزی: ۰۲۱-۸۸۸۶۲۰۸۵

FarmaSOS.com



JOY GOES TO EXTREMES. THE BMW M3.

Experience performance to the Mth degree in the M3 Sedan, Coupe and Convertible for 2011. Propelled by a 4.0-liter, 414-hp V-8 engine, eight separate throttle butterflies – one for each cylinder – yield crisp, responsive acceleration. Double-VANOS and advanced ion flow technology ensure seamless operation. Control all this power through a choice of standard 6-speed manual transmission or optional 7-speed M Double Clutch Transmission (DCT) – an M3 exclusive – while BMW's M Drive feature allows you

to customize driving dynamics. A carbon-fiber roof¹ and aluminum suspension reduce weight for increased agility; the Variable M Differential Lock grips road surfaces for optimum traction. M-style 18" light alloy wheels,² aerodynamic exterior mirrors and a choice of special M color options, including exclusive metallic paints, complete the high-profile look.

The Competition Package, new for 2011, adds new 19" M light alloy wheels, lowers the M3 Coupe and Sedan's suspension and raises

excitement with performance-enhancing DSC and Damping Control modifications.

Inside the sporty, sophisticated cabin filled with premium Novillo Leather,³ thrill to a different performance: the optional audio system with an 825-watt digital amplifier.

The BMW M3 Sedan, Coupe and Convertible: strap in, hang on, and enjoy the drive.

¹ M3 Coupe only.

² Optional 19" light alloy wheels also available.

³ Novillo Leather standard in the M3 Convertible, optional in the M3 Sedan and Coupe.

JOY DOESN'T COMPROMISE. BMW M6 COUPE AND M6 CONVERTIBLE.



Grand Touring pleasure meets track-bred precision in the M6 Coupe and M6 Convertible. Their mighty 500-hp 5.0-liter V-10 won "Best Engine" honors three years running.¹ Harnessed to a racing-inspired 7-speed SMG transmission that offers the personalized performance of 11 shift modes (six manual, five automatic), the seemingly boundless M Power has you sailing past 60 in just 4.5 seconds.² Those who want even more involvement can choose the optional 6-speed manual transmission.

suspension, exceptionally responsive steering and near-perfect 50/50 weight distribution make it handle with uncommon agility. 19" light alloy wheels equipped with 14.7" front/14.6" rear cross-drilled disc brakes provide immediate, fade-free response and great stopping power.

Outside, the M6 Coupe and Convertible flaunt bold head- and taillight designs, an aggressive front air dam, and 19" cast alloy wheels. The interior is a model of luxury and comfort, with a sleek center console and organically flowing door trim panels. Sensuous Merino Leather upholstered 18-way power front sport seats and a Logic7 audio system come standard. Luxurious interior trim choices

include rich wood options, as well as dashing, optional Carbon Fiber Black. And for thrilling, sun-drenched excursions, nothing outshines the M6 Convertible. Even with the top down, the spacious trunk holds two golf bags.

Once you take your first corner at speed, you'll know: no other luxury-performance coupe or convertible delivers such pure joy, passion, precision and power.

¹ International Engine of the Year Awards: International Engine of the Year – 2006; Best Engine Above 4 Liters – 2006, 2007, 2008; Best Performance Engine – 2006, 2007.
² BMW AG test results, M6 Coupe with SMG transmission; 4.5 seconds, M6 Convertible with SMG transmission. BMW urges you to obey all posted speed laws and always wear safety belts.



M6 Convertible shown in Black Sapphire Metallic. M6 Coupe shown in Indianapolis Red Metallic.

امداد خودرو فارما

تلفن: شبانه روزی: ۰۸۵-۸۸۸۶۲۰۲۱

FarmaSOS.co





JOY PLAYS ALL-OUT. BMW X5 M AND X6 M.

BMW injected over-the-top M performance into one of its most popular platforms, the SAV.[®] The results: the X5 M, a formidable blend of athletic prowess with amazing grip and comfortable seating for five. And the dynamic X6 M, where BMW M engineers started with a gorgeously sleek and sporty Sports Activity Coupe,[™] then added even more muscle and attitude.

Under the hood of both vehicles is an M Power masterpiece: the 4.4-liter M TwinPower Turbo. Calling on 555 hp and 500 lb-ft of torque, this V-8 is able to propel the X5 M and X6 M from 0-60 in just 4.5 seconds.¹ An advanced M Sport Automatic transmission lets you select three modes – Drive, Sport and M Manual – for total control over gear selection.

In both vehicles, the sport-tuned suspension is coupled with M paddle shifters on the steering wheel, for track-inspired excitement. Thanks to M Dynamic Performance Control, BMW's xDrive intelligent all-wheel-drive system is enhanced with a new level of customizable stability. Activating M Dynamic Mode syncs both systems for maximum responsiveness with superior traction.

The superior traction of xDrive, BMW's intelligent all-wheel-drive system, is paired with an M version of Dynamic Performance Control. This bolsters xDrive's power by selectively boosting torque to either of the two rear wheels. You'll be seeking out road slaloms to test its amazing degree of road grip and quick agility.

Outside, signature M gills, 20" light alloy wheels, large air intakes and quad tailpipes proclaim a proud M heritage. Inside, the luxurious cabins showcase M Sport front seats and surfaces in supple leather, while exclusive M stitching underscores their fine lineage. The X6 M seats four adults in individual comfort, while the X5 M accommodates five adults. Both offer roomy luggage compartments that hold up to four golf bags with ease.

The X5 M and X6 M: two gripping ways to enjoy M driving excitement on any road, in any weather.

¹ BMW AG test results. BMW urges you to obey posted speed laws and always wear safety belts.

X6 M shown in Melbourne Red Metallic. X5 M shown in Monte Carlo Blue Metallic with optional roof rails.

امداد خودرو فارما

تلفن شبانه روزی: ۰۲۱-۸۸۸۶۲۰۸۵

FarmaSOS.com



**BMW'S ACTIVE SAFETY CONCEPT:
PERFORMANCE FEATURES THAT
WORK TOGETHER SEAMLESSLY
MAY HELP YOU AVOID ACCIDENTS
BEFORE THEY HAPPEN.**

BMW vehicles provide class-leading performance, handling, acceleration, braking and suspension technologies. Because they are the same features that make BMWs so much fun to drive, you might not typically consider them "safety" features. However, their ability to actively respond to challenging driving situations can help you avoid collisions.

In every BMW, high-performance features do double duty as active safety features:

- Swift acceleration – A BMW can move you quickly and confidently out of a danger zone or into a "safe" spot.
- Responsive handling – BMWs allow you to steer with precision, to negotiate through or around problem areas.
- Large brakes – Stop with authority, thanks to large, fade-resistant brakes, boosted in emergencies by Dynamic Brake Control. Braking is responsive even in the rain with the Brake Drying feature.

- Near-perfect 50/50 weight distribution – This helps keep your vehicle under control during evasive maneuvers.
- Dynamic Stability Control (DSC) – This corrects over- and understeer, helping to keep you on your chosen course. According to the Insurance Institute for Highway Safety (IIHS), about half of all fatal passenger vehicle crashes involve a single vehicle. DSC-type systems can reduce the risk of becoming involved in these crashes by more than 50 percent.
- Run-flat tire system – Even with a puncture, the run-flat tire system helps keep the vehicle stable, letting you drive off a busy highway or out of a dangerous area, or just continue on your journey on a rainy night.¹

Some BMW models offer optional driver assistance systems, such as Forward Collision Warning and Night Vision with Pedestrian Detection, which further enhance your ability to avoid accidents. These are discussed in more detail on page 13.

¹ Up to 150 miles at 50 mph. Travel distance varies with load. Not available on all models. See your authorized BMW or BMW SAV® center for details.



امداد خودرو فارما

شعبه روزی: ۰۲۱-۸۸۸۶۲۰۸۸

FarmaSOS.com



JOY IS FIERCELY PROTECTIVE. BMW PASSIVE SAFETY FEATURES.¹

Don't let the term mislead you. There's nothing passive about BMW's "passive safety" design – or how quickly this impressive array of safety features responds to an accident.

BMW's passive safety system starts with the very architecture of each vehicle. An extremely rigid occupant "safety cell," reinforced by strong roof support, channels the impact force around all occupants; front and rear ends are designed to deform to absorb energy. Additionally, in the event of a side impact, special hooks lock the doors to the body for added protection, then unlock after the impact.

When sensors detect a severe impact, BMW's "intelligent" safety system deploys the most effective combination of airbags, safety-belt pretensioners and more, to help protect you and your passengers. Afterwards, the doors are automatically unlocked and the four-way hazard flashers and interior lights are switched on to summon emergency aid, and the fuel pump is switched off. In a severe accident, any or all of these may be deployed:

Advanced front airbags

Advanced airbag technology determines if and how forcefully to deploy each front airbag, based on accident severity and safety-belt usage. If the seat is not occupied, or if a force threshold is not met, the airbag is designed not to activate.

Door- or seat-mounted side-impact airbags

In case of a side impact, side-impact airbags deploy quickly for added protection.

Active Knee Protection¹

These airbags deploy from the bottom of the dashboard to provide added protection for the knees and legs of the driver and front passenger.

Head Protection System (HPS)¹

In the event of a side impact, BMW's award-winning Head Protection System helps keep the driver's and front passenger's heads from hitting hard objects, and from being hit by certain objects penetrating the windows. Used in conjunction with side-impact airbags, this firm inflatable curtain helps provide outstanding protection.

BMW Assist^{TM1}

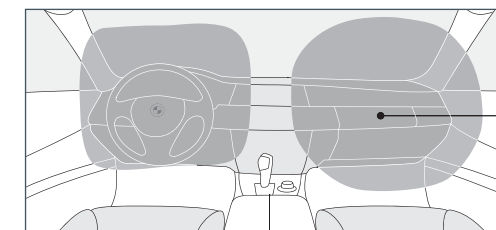
If your vehicle is equipped with the BMW Assist system, in the event of a severe accident, our enhanced Automatic Collision Notification service automatically transmits your vehicle's location and crash information to a response specialist, who then speaks to you to determine if you are alright. The transmitted data is also assessed to determine if there is a risk of severe injury. A second response specialist requests dispatch of the appropriate emergency services to your location.

¹ Not all features available on all models. See your authorized BMW or BMW SAV® center for details. Always wear safety belts. Do not install a rearward-facing child-restraint device in the front passenger's seat, unless the airbag is switched off. All children should always sit in the rear seat and use, depending on age, either an appropriate child-restraint system or safety belts in the car. Follow the instructions of the child-seat manufacturer for proper installation. Also, consult your Owner's Manual for instructions on activating the safety-belt Automatic Locking Retractor (ALR).

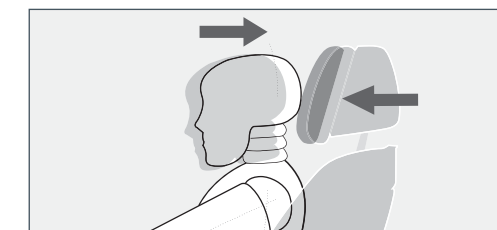
Please note: Airbag renderings are for illustrative purposes only. Depending upon the type of accident, none, some or all airbags may deploy. Actual airbags may have different shape.

امداد خودروفا
تلفن شبانه روزی: ۰۸۵-۸۸۸۶۲۰۲۱

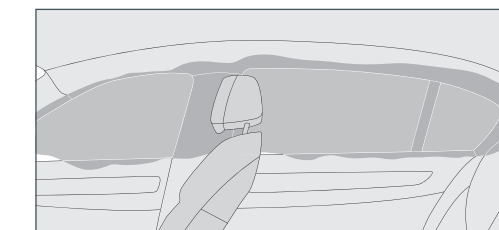
FarmaSOS.com



Front-impact airbags with advanced deployment technology and Active Knee Protection.¹



Active Head Restraints and safety-belt pretensioners.¹



Head Protection System (HPS).¹


ALMS

Every BMW model is built upon the platform of Joy – the pure, exhilarating thrills that only a BMW can deliver. But it is through BMW Motorsport – our racing division – that we hone those features and technologies that deliver such tremendous driving thrills. We treat the tracks of the world not only as competitive arenas, but also as laboratories. After all, the proof of the Ultimate Driving Machine® is in its track record.

From the Mille Miglia of the 1930s to today's American Le Mans Series, each racing event

gives us the opportunity to advance the state of our art. From refined and powerful engines, to sporty and precise handling, every BMW hallmark was first developed in competition before making its way to the production vehicles created by BMW M, our performance division.

Entering the second year of ALMS competition, the fourth-generation, V-8-equipped M3 provides its drivers with a powerfully advanced weapon in the drive for the checkered flag. Piloting the BMW M3 GT2, the inaugural BMW Rahal Letterman Racing Team rallied

to one overall win, five podium finishes, and three fastest race laps in last year's American Le Mans Series. This year promises much more excitement, innovation and victory laps. In fact, many daily drivers experience similar thrills behind the wheels of their M3 Sedans, Coupes and Convertibles. At BMW M, we imbue our passion for high-performance racing in all of our vehicles – so that everyone who drives a BMW will know the same exhilaration.  **Power**

To learn more, visit bmw-motorsport.com.

امداد خودرو فارما

تلفن شعبه روزانه: ۰۲۱-۸۸۶۲۰۸۵

FarmaSOS.com



JOY TAKES LEARNING TO THE LIMIT. BMW PERFORMANCE CENTER

Nestled at the foothills of the beautiful Blue Ridge Mountains in Spartanburg, SC, is the BMW Performance Center – the ultimate destination for BMW enthusiasts in the U.S.

Here everyone from teens to racing enthusiasts can hone their driving skills at the BMW Performance Driving School. Visitors can browse the Zentrum – home to a vintage car museum, theater and gift shop – and tour the manufacturing facility where

various BMW models are built for worldwide export. New owners can take delivery at the Vehicle Delivery Center. There's even a corporate conference center, where meetings are combined with advanced driver training – a unique way to build teamwork. And easy day trips afford other pleasures, such as antiquing, sightseeing, sports and regional cuisine.

The BMW Performance Center is a great location for an unforgettable vacation.



BMW CHAMPIONSHIP: WORLD-CLASS PRO ACTION, FUN AND FUNDRAISING.

Each September, golf fans await an exciting event: the BMW Championship. It is the third of four PGA TOUR Playoff tournaments held to determine the winner of the \$10 million FedExCup.

In addition to combining top-level play with the biggest names in golf, the BMW Championship supports a worthy cause. All proceeds from the event go to the Evans Scholars Foundation, which gives deserving golf caddies the opportunity to pursue a higher education.

Since the first BMW Championship in 2007, BMW has donated a grand total of \$7.3 million to the Foundation. These funds help pay the tuition, room and board for the roughly 840 Evans Scholars who attend college each year. Additionally, should any player hit a hole-in-one during the tournament, BMW will fund a four-year Evans Scholarship.

BMW also helps off the green, with the Evans Scholars/BMW Internship Program. Each summer, a number of Evans Scholars are able to work at BMW, gaining invaluable experience for their post-college careers.

To learn more about BMW's involvement in the BMW Championship and the Evans Scholars foundation, visit bmwusa.com/bmwchampionship.



امداد خودرو فارما

۰۸۵-۸۸۶۲۰۸۵-۲۱

FarmaSOS.com

TO TRULY APPRECIATE YOUR NEW BMW, WHY NOT DRIVE IT ON ITS HOME TURF?

Drive your new BMW on the roads it was designed for – with the BMW European Delivery Program. Order your new BMW here and pick it up in Europe,¹ and you'll enjoy savings that might pay for the trip.

You'll take delivery at the stunning BMW Welt facility, an attraction worth visiting on its own. Then turn your vehicle pickup into a vacation. BMW's optional driving packages allow

you to use Munich as a starting point for a European driving tour. Plan an exclusive, once-in-a-lifetime driving adventure, enjoying VIP treatment at some of the world's best hotels. We'll then ship your BMW home from one of our many port cities. BMW even provides 14 days of free premium road insurance, as well as customs duty and clearance.

The fun and savings of BMW European Delivery are available with either lease or finance options through BMW Financial Services.²

For details, contact an authorized BMW center, or visit bmwusa.com/europeandelivery.

¹ Not all models eligible for program. See your authorized BMW or BMW SAV® center for details.

² There is a maximum stay of 90 days with BMW Financial Services lease or finance packages.

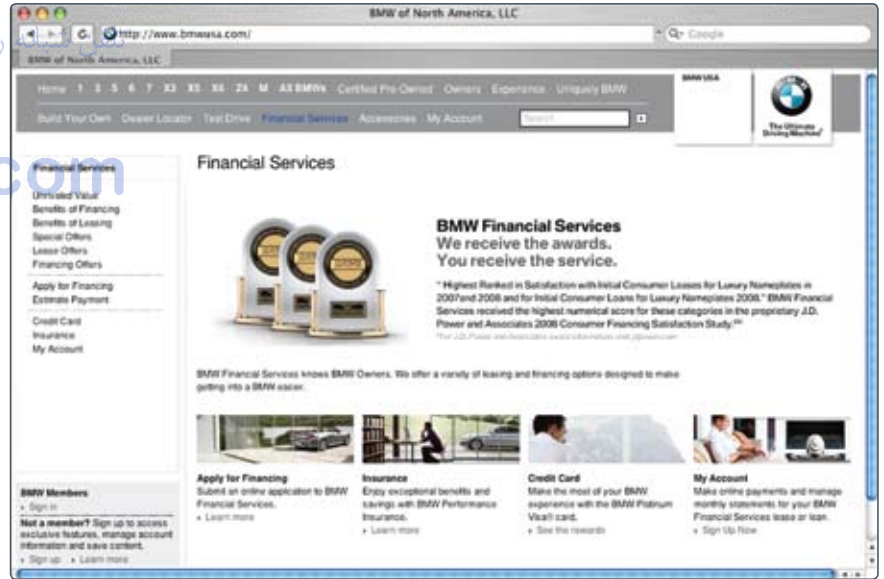
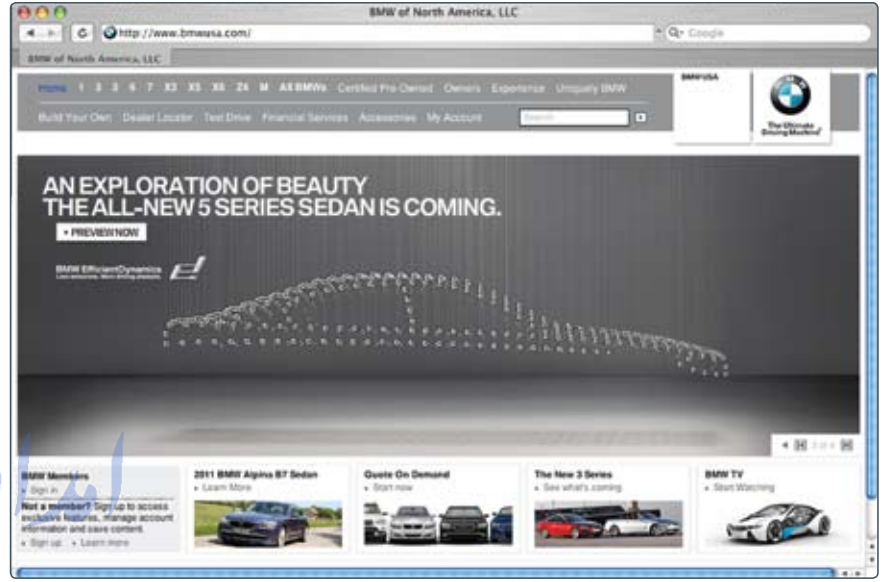
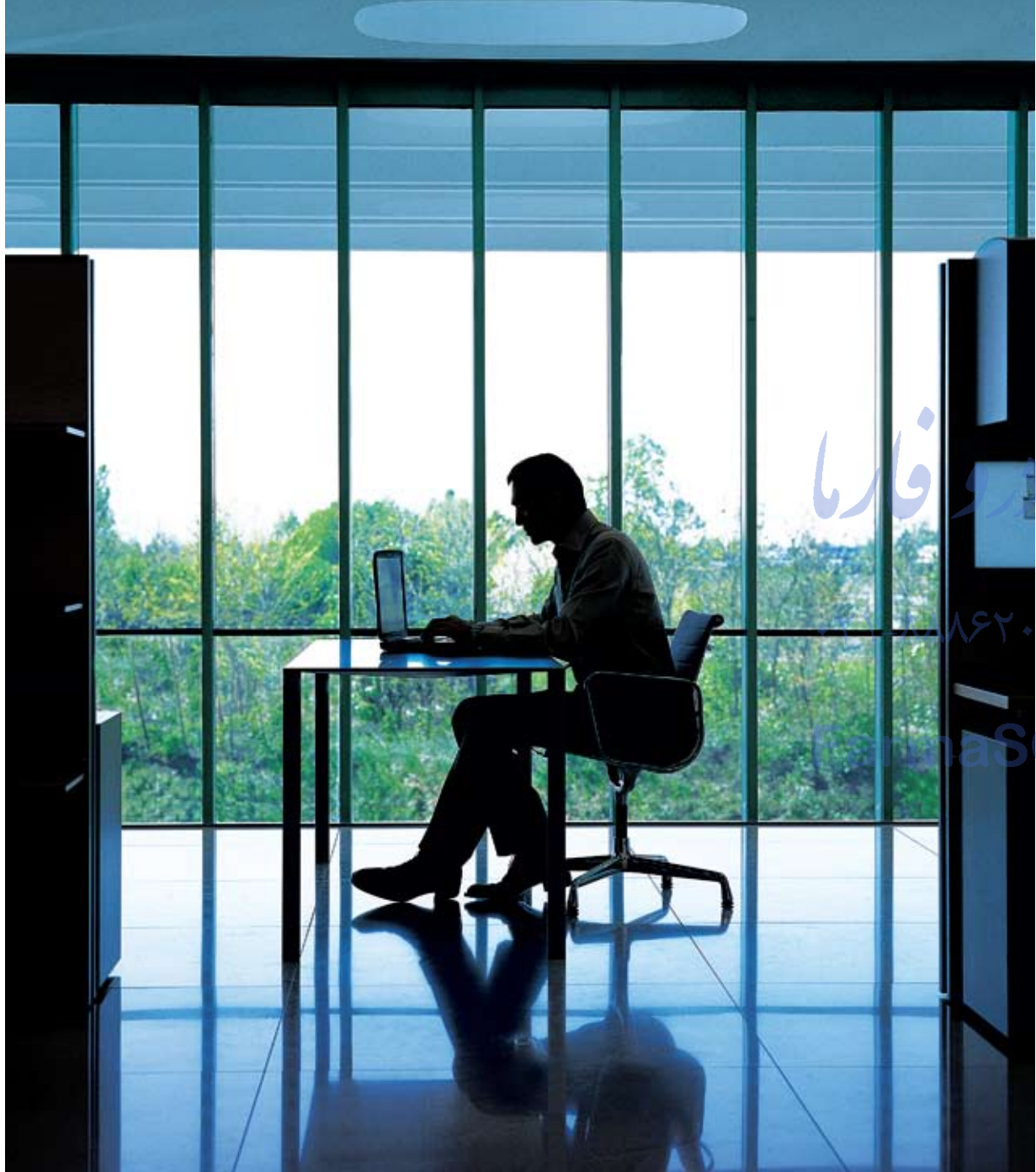
BMW FINANCIAL SERVICES: ONE MORE WAY WE DELIVER HIGH PERFORMANCE.

BMW Financial Services offers a wide range of automotive lease and finance programs designed exclusively for BMW drivers. You can choose flexible lease terms from 24 to 60 months. With PrePay, handle your entire lease in a single up-front payment. BMW Financial Services also offers competitive rates on financing. You have the option of no down payment (subject to credit approval), and can select from repayment terms that make financing easy.

You can set up automatic payments from any checking or savings account through My Account at bmwusa.com/myaccount. As a My Account member, you can review and update your BMW Financial Services accounts online, calculate Mid-term Mileage adjustments, obtain a copy of your contract, view your payment history, and more. To find out more about BMW Financial Services, visit bmwusa.com/fs.

Another benefit is the BMW Card. It's the only credit card that lets you earn exclusive BMW Reward Points, redeemable for up to \$5000 back on your next BMW Financial Services loan or lease. You'll earn one point for every two dollars you spend. Plus, when you buy gas, you'll collect double points. It's that simple. Call 1-866-861-8187 to apply today!

Note: All products and services subject to credit approval. Some products are made available through BMW Bank of North America, a wholly owned subsidiary of BMW Financial Services NA, LLC.



BMWUSA.COM: YOUR OWN, PERSONAL BMW CENTER, OPEN 24/7.

It's late, your preferred BMW center is closed, and you want to learn about the newest BMW models. No problem; just visit bmwusa.com – the place for buying or leasing a new or Certified Pre-Owned BMW, as well as a dynamic center for fun, help and information. Click on “Build Your Own” to assemble the model that reflects your style – colors, options, the works. Then explore BMW Financial Services for financing options, using the payment estimator. Apply for financing online and enjoy a speedy response.¹ You can even email your favorite vehicle configuration to an authorized BMW center to begin construction.

Discover BMW's heritage and many technological breakthroughs. Catch up on all the latest BMW news. Learn about upcoming programs and events, and much, much more. And whether you're a BMW owner or just a fan, check out My Account. This is your private site for a wealth of information, from getting insiders' news to keeping vehicle records, asking questions, checking on your BMW Financial Services account and many other advantages. The excitement of BMW is yours to explore – at bmwusa.com!

¹ Subject to credit approval and other terms and conditions.

BMW VEHICLE SPECIFICATIONS

		1 Series Coupes		1 Series Convertibles		
		128i	135i	128i	135i	
Engine	3.0-liter, DOHC 24-valve inline 6-cylinder ^{1,2}	●		●		
	3.0-liter, DOHC 24-valve inline 6-cylinder TwinPower Turbo ^{1,3}		●		●	
	3.0-liter, DOHC 24-valve inline 6-cylinder TwinPower Turbo diesel ³					
	Nominal output / maximum torque	hp / lb-ft	230 / 200	300 / 300	230 / 200	300 / 300
Drivetrain	6-speed manual transmission	●	●	●	●	
	6-speed STEPTRONIC automatic transmission ⁷	○ ⁸		○ ⁸		
	7-speed Double Clutch Transmission		○ ¹²		○ ¹²	
Performance data	Acceleration, 0-60 mph ¹⁴	sec	6.1 (6.7)	5.1 (5.0)	6.4 (7.0)	5.4 (5.3)
	Top speed ¹⁵	mph	130 [149]	131 [149]	130 [150]	130 [150]
Handling, ride and braking	xDrive all-wheel drive with Hill Descent Control					
	DSC with Brake Fade Compensation, Drying and Stand-by	●	●	●	●	
	Run-flat tires	●	●	●	●	
	Active Steering		○		○	
	Active Cruise Control ¹⁹					
Safety and technology	Front-impact airbag Supplementary Restraint System (SRS) ²¹	●	●	●	●	
	Front-seat Head Protection System (HPS)	●	●	●	●	
	Rear-seat Head Protection System	●	●	●	●	
	Adaptive Brake Lights	●	●	●	●	
	Xenon Adaptive Headlights and Corona headlight-rings	○	●	○	●	
	Automatic high beams	○ ²²	○ ²²	○ ²²	○ ²²	
	Navigation system with Real Time Traffic Information	○	○	○	○	
	Check Control	●	●	●	●	
BMW Services	BMW Ultimate Service ^{TM28}	●	●	●	●	
	BMW Assist ^{TM29} with Bluetooth [®] wireless technology ³⁰	○	○	○	○	
Audio	SIRIUS Satellite Radio	○/Δ	○/Δ	○/Δ	○/Δ	
	HD Radio TM	●	●	●	●	
	iPod [®] and USB adapter	○	○	○	○	

3 Series Sedans					3 Series Sports Wagons		3 Series Coupes					3 Series Convertibles		
328i	328i xDrive	335i	335i xDrive	335d	328i	328i xDrive	328i	328i xDrive	335i	335i xDrive	335is	328i	335i	335is
●	●				●	●	●	●				●		
		●	●					●	●	●			●	●
230 / 200	230 / 200	300 / 300	300 / 300	265 / 425	230 / 200	230 / 200	230 / 200	230 / 200	300 / 300	300 / 300	320 / 332 ⁶	230 / 200	300 / 300	320 / 332 ⁶
○ ⁸	○ ⁸	○ ⁸	○ ⁸	● ⁸	○ ⁸	○ ⁸	○ ⁸	○ ⁸	○ ⁸	○ ⁸		○ ⁸	○ ⁸	
6.3 (6.9)	6.9 (7.1)	5.4 (5.6)	5.3 (5.4)	6.0	6.5 (7.1)	7.1 (7.3)	6.2 (6.8)	6.8 (7.0)	5.3 (5.5)	5.2 (5.3)	5.1 (5.0)	6.7 (7.2)	5.5 (5.7)	5.2 (5.2)
130 [150]	130 [150]	130 [150]	130 [150]	130 [150]	130 [150]	130 [148] ([150])	130 [150]	130 [150]	130 [150]	130 [150]	150	130 [150]	130 [150]	150
	●		●			●		●		●				
	●	●	●	●	●	●	●	●	●	●	●	●	●	●
	●	●	●	●	●	●	●	●	●	●	●	●	●	●
○ ²⁰	○ ²⁰	○ ²⁰	○ ²⁰	○ ²⁰	○ ²⁰	○ ²⁰	○ ²⁰	○ ²⁰	○	○ ²⁰	○	○ ²⁰	○ ²⁰	○ ²⁰
●	●	●	●	●	●	●	●	●	●	●	●	●	●	●
●	●	●	●	●	●	●	●	●	●	●	●	●	●	●
●	●	●	●	●	●	●	●	●	●	●	●	●	●	●
○	○	●	●	●	○	○	●	●	●	●	●	●	●	●
○ ²²	○ ²²	○ ²²	○ ²²	○ ²²	○ ²²	○ ²²	○ ²²	○ ²²	○ ²²	○ ²²	○ ²²	○ ²²	○ ²²	○ ²²
○	○	○	○	○	○	○	○	○	○	○	○	○	○	○
●	●	●	●	●	●	●	●	●	●	●	●	●	●	●
●	●	●	●	●	●	●	●	●	●	●	●	●	●	●
○	○	○	○	○	○	○	○	○	○	○	○	○	○	○
○/Δ	○/Δ	○/Δ	○/Δ	○/Δ	○/Δ	○/Δ	○/Δ	○/Δ	○/Δ	○/Δ	○/Δ	○/Δ	○/Δ	○/Δ
●	●	●	●	●	●	●	●	●	●	●	●	●	●	●
○	○	○	○	○	○/Δ	○/Δ	○/Δ	○/Δ	○/Δ	○/Δ	○/Δ	○/Δ	○/Δ	○/Δ

اراد خودرو فارما

تلفن: ۰۲۱-۸۸۶۲۰۸۵

FarmaSOS.com

BMW VEHICLE SPECIFICATIONS

		5 Series Sedans			5 Series Gran Turismos			
		528i	535i	550i	535i	550i	550i xDrive	
Engine	3.0-liter, DOHC 24-valve inline 6-cylinder ^{1,2}	●						
	3.0-liter, DOHC 24-valve inline 6-cylinder TwinPower Turbo ^{1,3}		●		●			
	4.4-liter, DOHC (4-cam) 32-valve TwinPower Turbo V-8 ^{1,3}			●		●	●	
	4.4-liter, V-8 TwinPower Turbo with electric motor and 120-volt lithium-ion battery ^{1,3}							
	4.8-liter, DOHC (4-cam) 32-valve V-8 ⁵							
	6.0-liter, DOHC (4-cam) 48-valve TwinPower Turbo V-12 ^{1,3}							
	Nominal output / maximum torque	hp / lb-ft	240 / 230	300 / 300	400 / 450	300 / 300	400 / 450	400 / 450
Drivetrain	6-speed manual transmission		●	●				
	6-speed Sport Automatic transmission ¹⁰							
	6-speed automatic transmission ¹¹							
	7-speed Sport Automatic transmission							
	8-speed automatic transmission ¹¹	●	○	○	●	●	●	
8-speed Sport Automatic transmission	○ ^{12, 17}	○ ^{12, 17}	○ ^{12, 17}					
Performance data	Acceleration, 0-60 mph ¹⁴	sec	6.6	5.7	5.0	6.2	5.4	TBD
	Top speed ¹⁵	mph	130 [150]	130 [150]	130 [150]	130	130 [150]	130
Handling, ride and braking	xDrive all-wheel drive with Hill Descent Control						●	
	DSC with Brake Fade Compensation, Drying and Stand-by	●	●	●	●	●	●	
	Run-flat tires	●	●	●	●	●	●	
	Active Steering		○ ^{16, 17}	○ ^{16, 17}	○ ^{16, 17}	○ ^{16, 17}	○ ^{16, 17}	
	Active Cruise Control with Stop & Go ¹⁹	○	○ ²⁰	○ ²⁰	○	○	○	
Safety and technology	Front-impact airbag Supplementary Restraint System (SRS) ²¹	●	●	●	●	●	●	
	Front-seat Head Protection System (HPS)	●	●	●	●	●	●	
	Rear-seat Head Protection System	●	●	●	●	●	●	
	Adaptive Brake Lights	●	●	●	●	●	●	
	Xenon Adaptive Headlights and Corona headlight-rings	○	●	●	●	●	●	
	Automatic high beams	○ ²³	○ ²³	○ ²³	○ ²³	○ ²³	○ ²³	
	Navigation system with Real Time Traffic Information	○	○	●	○	●	●	
	Brake Energy Regeneration	●	●	●	●	●	●	
	Check Control	●	●	●	●	●	●	
BMW Services	BMW Ultimate Service ^{TM28}	●	●	●	●	●	●	
	BMW Assist ^{TM29} with Bluetooth [®] wireless technology ³⁰	●	●	●	●	●	●	
Audio	SIRIUS Satellite Radio	○/△	○/△	○/△	○/△	○/△	○/△	
	HD Radio TM	●	●	●	●	●	●	
	iPod [®] and USB adapter	○	○	○	○	○	○	

6 Series Coupe	6 Series Convertible	7 Series Sedans										BMW ALPINA Sedans	
650i	650i	740i	740Li	750i	750i xDrive	ActiveHybrid 750i	750Li	750Li xDrive	ActiveHybrid 750Li	760Li	B7 SWB	B7 LWB	
		●	●					●	●		●	●	
				●	●				●				
						●			●				
		●	●							●			
360 / 360	360 / 360	315 / 330	315 / 330	400 / 450	400 / 450	455 / 515	400 / 450	400 / 450	455 / 515	535 / 550	500 / 516	500 / 516	
○	○												
●	●										●	●	
		●	●	●	●		●	●					
○	○	○ ¹⁶	○ ¹⁶	○ ¹⁶			○ ¹⁶			● ¹⁶	○ ¹⁶	○ ¹⁶	
5.3 (5.4)	5.6 (5.7)	5.8	5.9	5.1	5.0	4.7	5.2	5.1	4.8	4.5	4.5	4.6	
150	150	150	150	150	150	150	150	150	150	150	174	174	
						●			●				
●	●	●	●	●	●	●	●	●	●	●	●	●	
●	●	●	●	●	●	●	●	●	●	●	●	●	
○	○	○ ¹⁶	○ ¹⁶	○ ¹⁶			○ ¹⁶			● ¹⁶	○ ¹⁶	○ ¹⁶	
●	●	●	●	●	●	●	●	●	●	●	●	●	
●	●	●	●	●	●	●	●	●	●	●	●	●	
●	●	●	●	●	●	●	●	●	●	●	●	●	
●	●	●	●	●	●	●	●	●	●	●	●	●	
○	○	○ ²³	○ ²³	○ ²³	○ ²³	○ ²³	○ ²³	○ ²³	○ ²³	●	○ ²³	○ ²³	
●	●	●	●	●	●	●	●	●	●	●	●	●	
●	●	●	●	●	●	●	●	●	●	●	●	●	
●	●	●	●	●	●	●	●	●	●	●	●	●	
○/△	○/△	○	○	○	○	○	○	○	○	● ³¹	● ³¹	● ³¹	
●	●	●	●	●	●	●	●	●	●	●	●	●	
○ ³²	○ ³²	○ ³²	○ ³²	○ ³²	○ ³²	○	○ ³²	○ ³²	○	●	●	●	

ایراد خودرو فارما

تلفون شبانه روزی: ۰۲۱-۸۸۶۲۰۸۵

FarmaSOS.com

The X3, X5 and X5 M SAVs, and the X6 and X6 M Sports Activity CoupesTM are available only at authorized BMW SAV[®] centers. Further information can be obtained from your authorized BMW or BMW SAV center or bmwusa.com.

● Standard ○ Optional △ BMW center-installed accessory

BMW VEHICLE SPECIFICATIONS

		Z4 Roadsters			Sports Activity Vehicles®	
		sDrive30i	sDrive35i	sDrive35is	X3 xDrive30i	
Engine	3.0-liter, DOHC 24-valve inline 6-cylinder ^{1,2}	●			●	
	3.0-liter, DOHC 24-valve inline 6-cylinder TwinPower Turbo ^{1,3}		●	●		
	3.0-liter, DOHC 24-valve inline 6-cylinder TwinPower Turbo diesel ³					
	4.0-liter, DOHC (4-cam) 32-valve V-8 ⁴					
	4.4-liter, DOHC (4-cam) 32-valve TwinPower Turbo V-8 ^{1,3}					
	4.4-liter, DOHC (4-cam) 32-valve M TwinPower Turbo V-8 ^{3,4}					
	4.4-liter, V-8 TwinPower Turbo with 2 electric motors, 2-mode active transmission ^{1,3}					
	5.0-liter, DOHC (4-cam) 40-valve V-10 ⁴					
Nominal output / maximum torque	hp / lb-ft	255 / 220	300 / 300	335 / 332+37 ⁵	260 / 225	
Drivetrain	6-speed manual transmission	●	●		●	
	6-speed STEPTRONIC automatic transmission ⁷				○ ^{8,9}	
	6-speed Sport Automatic transmission ¹⁰	○				
	6-speed M Sport Automatic transmission ¹²					
	7-speed Double Clutch Transmission		○	●		
	7-speed M Double Clutch Transmission with Drivelogic ¹²					
	7-speed Sport Automatic transmission					
	7-speed M Sequential Manual Gearbox (SMG) with Drivelogic ¹²					
8-speed automatic transmission ¹¹						
Performance data	Acceleration, 0-60 mph ¹⁴	sec	5.6 (6.0)	5.1 [5.0]	4.8	6.9 (7.1)
	Top speed ¹⁵	mph	130 (155)	130 (155)	155	130 [143] (130 [142])
Handling, ride and braking	xDrive all-wheel drive with Hill Descent Control				●	
	DSC with Brake Fade Compensation, Drying and Stand-by	●	●	●	●	
	Run-flat tires	●	●	●		
	Active Steering				○ ¹⁸	
	Active Cruise Control with Stop & Go ¹⁹				○ ¹⁹	
Safety and technology	Front-impact airbag Supplementary Restraint System (SRS) ²¹	●	●	●	●	
	Front-seat Head Protection System (HPS)				●	
	Rear-seat Head Protection System				●	
	Adaptive Brake Lights	●	●	●	●	
	Xenon Adaptive Headlights and Corona headlight-rings	●	●	●	○	
	Automatic high beams	○ ²²	○ ²²	○ ²²		
	Navigation system with Real Time Traffic Information	○	○	○	○ ²⁵	
	Brake Energy Regeneration	●	●	●		
	Check Control	●	●	●	●	
BMW Services	BMW Ultimate Service ^{TM28}	●	●	●	●	
	BMW Assist ^{TM29} with Bluetooth® wireless technology ³⁰	○	○	○	○	
Audio	SIRIUS Satellite Radio	○/Δ	○/Δ	○/Δ	Δ	
	HD Radio TM	●	●	●	●	
	iPod® and USB adapter	○	○	○		

Sports Activity Vehicles			Sports Activity Coupes™			M Cars					M Vehicles	
X5 xDrive35i†	X5 xDrive35d	X5 xDrive50i	X6 xDrive35i	X6 xDrive50i	ActiveHybrid X6	M3 Sedan	M3 Coupe	M3 Convertible	M6 Coupe	M6 Convertible	X5 M	X6 M
●			●									
	●					●	●	●				
		●		●							●	●
					●				●	●		
300 / 300	265 / 425	400 / 450	300 / 300	400 / 450	480 / 575	414 / 295	414 / 295	414 / 295	500 / 383	500 / 383	555 / 500	555 / 500
						●	●	●	○	○		
	●										●	●
		●	● ¹⁰	● ¹⁰					●	●		
6.4	6.9	5.3	6.3	5.2	5.4	4.5 w/M DCT 155	4.5 w/M DCT 155	4.9 w/M DCT 155	4.5 w/SMG 155	4.6 w/SMG 155	4.5	4.5
130 [150]	130 [150]	130 [150]	130 [150]	130 [150]	130						155	155
●	●	●	●	●	●	●	●	●	●	●	●	●
●	●	●	●	●	●	●	●	●	●	●	●	●
●	●	●	●	●	●						●	●
○ ¹⁸		○	○ ¹⁷	○ ¹⁷								
○ ¹⁹		○	○	○								
●	●	●	●	●	●	●	●	●	●	●	●	●
●	●	●	●	●	●	●	●	●	●	●	●	●
●	●	●	●	●	●	●	●	●	●	●	●	●
○ ^{18,24}	○ ²²	○ ²²	○ ²²	○ ²²	○	○ ²²	○ ²²	○ ²²	○	○	○ ²³	○ ²³
○	○	○	○	●	●	○ ²⁶	○ ²⁶	○ ²⁶	●	●	●	●
●	●	●	●	●	●						● ²⁷	● ²⁷
●	●	●	●	●	●	●	●	●	●	●	●	●
○	○	○	○	○	●	○	○	○	●	●	●	●
○	○	○	○	○	○	○/Δ	○/Δ	○/Δ	○/Δ	○/Δ	○/Δ	○/Δ
●	●	●	●	●	●	●	●	●	●	●	●	●
○	○	○	○ ³²	○ ³²	●	○	○	○	○	○	○	○

امداد خودرو فارما

FarmaSOS.com

The X3, X5 and X5 M SAVs, and the X6 and X6 M Sports Activity Coupes™ are available only at authorized BMW SAV® centers. Further information can be obtained from your authorized BMW or BMW SAV center or bmwusa.com.

● Standard ○ Optional Δ BMW center-installed accessory

Further information can be obtained from your BMW or BMW SAV® center or bmwusa.com.

† Includes X5 xDrive35i, X5 xDrive35i Premium and X5 xDrive35i Sport Activity models.

Figures in () apply to vehicles with automatic transmission. Figures in [] apply to vehicles with optional Sport Package or M Sport Package.

- ¹ Includes Double-VANOS “steplessly” variable valve timing.
- ² Includes composite magnesium/aluminum engine block with Valvetronic “breathing” technology.
- ³ Includes High Precision Direct Injection.
- ⁴ Includes M high-pressure Double-VANOS.
- ⁵ Includes aluminum engine block with Valvetronic “breathing” technology, Double-VANOS and 2-stage variable intake manifold.
- ⁶ 37 lb-ft of additional temporary torque is delivered with the standard overboost function.
- ⁷ Includes Adaptive Transmission Control (ATC), and Sport and Manual shift modes.
- ⁸ With optional Sport or M Sport Package: optional steering wheel-mounted paddle shifters are automatically added.
- ⁹ Available as a no-cost option.
- ¹⁰ With Sport and Manual shift modes and steering wheel-mounted paddle shifters.
- ¹¹ With Automatic and Manual shift modes, and fully synchronized electronic gear changes in both.
- ¹² Includes steering wheel-mounted paddle shifters.
- ¹³ Includes Adaptive Transmission Control (ATC); Drive, Sport and M Manual shift modes; and steering wheel-mounted paddle shifters.
- ¹⁴ BMW test results, unless otherwise noted. Actual acceleration results may vary, depending on specification of vehicle, road and environmental conditions; testing procedures and driving style. These results should be used for comparison only and verification should not be attempted on public roads. BMW urges you to obey all posted speed laws and always wear safety belts.
- ¹⁵ Top speed limited electronically.
- ¹⁶ Integral Active Steering.
- ¹⁷ Requires optional Sport Package.
- ¹⁸ Available only in X5 xDrive35i Premium and X5 xDrive35i Sport Activity.
- ¹⁹ Active Cruise Control is not a substitute for the driver’s responsibility in adjusting speed and otherwise controlling the vehicle. After evaluating road, traffic and visibility conditions, the driver must decide whether and how the system is used.
- ²⁰ Requires Automatic transmission.
- ²¹ Advanced deployment technology; includes front side-impact airbags.
- ²² Requires optional Premium Package.
- ²³ Included in optional Driver Assistance Package.
- ²⁴ Requires optional Convenience Package.
- ²⁵ Does not include Real Time Traffic Information.
- ²⁶ Included in optional Technology Package.
- ²⁷ Standard as of April 2010 production.
- ²⁸ Coverage applies only to U.S.-specification BMWs imported and distributed by BMW of North America and sold or leased through authorized BMW centers or its European Delivery program. Vehicles purchased or leased from BMW centers in any other country do not qualify.
- ²⁹ BMW Assist™ Safety Plan included for four years. See your BMW center for details, or visit bmwassist.com.
- ³⁰ Requires a BMW-approved Bluetooth® wireless technology enabled mobile phone. See your BMW center for details on equipment and service.
- ³¹ Included as standard for one year.
- ³² Available only as part of Premium Sound Package.

U.S. Importer and Distributor: BMW of North America, LLC, Woodcliff Lake, NJ 07677. All illustrations and specifications contained in this brochure are based on the latest product information available at the time of printing. BMW reserves the right to make changes at any time, without notice, in colors, materials, equipment, specifications and models. BMW may, subject to legal requirements, determine the Model Year designation of its vehicles. The Model Year designation on any particular model may be longer or shorter than 12 months. Some vehicles pictured may contain non-U.S. equipment. Some models may be shown with optional equipment. While BMW NA makes diligent efforts to provide accurate information in this brochure, there is no guarantee or warranty of accuracy. Furthermore, we do not assume any liability for the accuracy or completeness of information presented. This brochure shall not be used or relied upon as a substitute for information that is available from your BMW or BMW SAV center. Due to low-profile tires, please note: wheels, tires and suspension parts are more susceptible to road hazard and consequential damages. Further information can be obtained from your authorized BMW or BMW SAV center, or bmwusa.com. The Sports Activity Vehicle® and Sports Activity Coupe™ lines are available only at authorized BMW SAV centers. ©2010 BMW of North America, LLC. Not to be reproduced wholly or in part without written permission of BMW of North America, LLC. The BMW name, logo, model names, SAV, Sports Activity Vehicle and Sports Activity Coupe are registered trademarks. The Bluetooth word mark and logos are owned by the Bluetooth SIG, Inc. and any use of such marks by BMW is under license. iPhone and iPod are registered trademarks of Apple Inc. SIRIUS Satellite Radio is a registered trademark. Other trademarks and registered trademarks are the property of their respective owners.

Printed in USA 6017-X10-XX

More about BMW

bmwusa.com
1-800-334-4BMW



The Ultimate
Driving Machine®

FarmaSOS.com

تلفن شماره روزی: ۲۱-۸۸۶۲۰۸۵